



Corona Virus Disease (COVID-19) Situational Report

Report No.161 Date of Issue 25th August, 2020, 19:00 GMT

HIGHLIGHTS

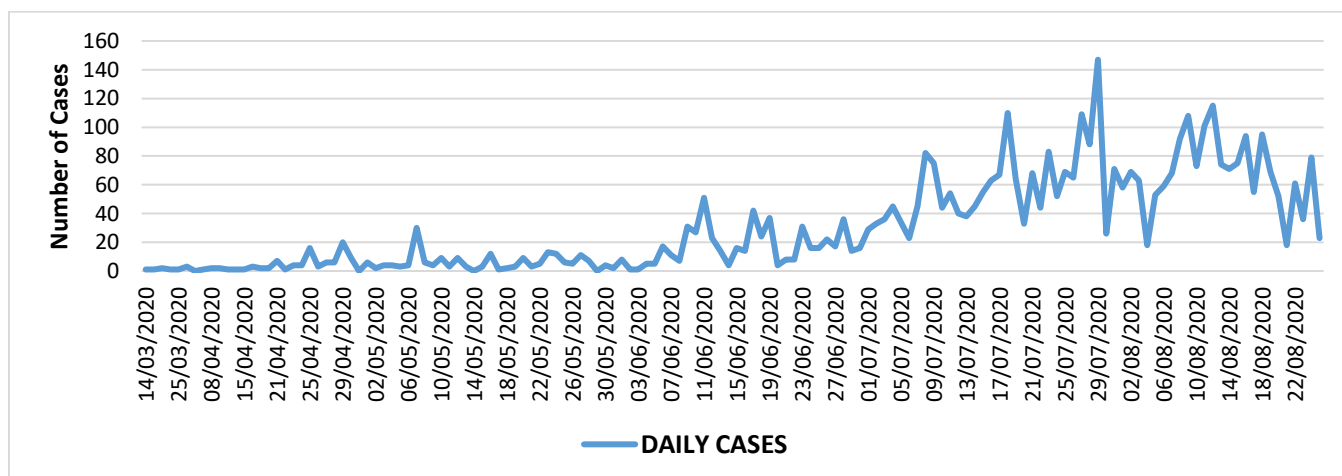
- As of 25th August 2020, there were 4327 confirmed COVID-19 cases, 86 deaths and 2936 recoveries in Eswatini.
- 23 COVID-19 cases and 23 recoveries were reported in the last 24 hours.
- 68% of reported COVID-19 cases have recovered.
- The new cases are from all the regions.
- In the last 24 hours, 325 COVID-19 tests were conducted. Positivity rate was 7%.

New	Confirmed	23
	Recoveries	23
	Deaths	1
Cumulative	Confirmed	4327
	Recoveries	2959
	Deaths	86
Case fatality rate		2.0%

Summary of COVID-19 Cases in Eswatini as at 25th August, 2020

Region	New cases	Cumulative confirmed cases	Cumulative deaths	Case fatality rate (%)
Manzini	3	1944	44	2.3
Hhohho	10	1723	34	2.0
Lubombo	1	305	1	0.3
Shiselweni	9	355	7	2.0
National	23	4327	86	2.0

Confirmed cases by day

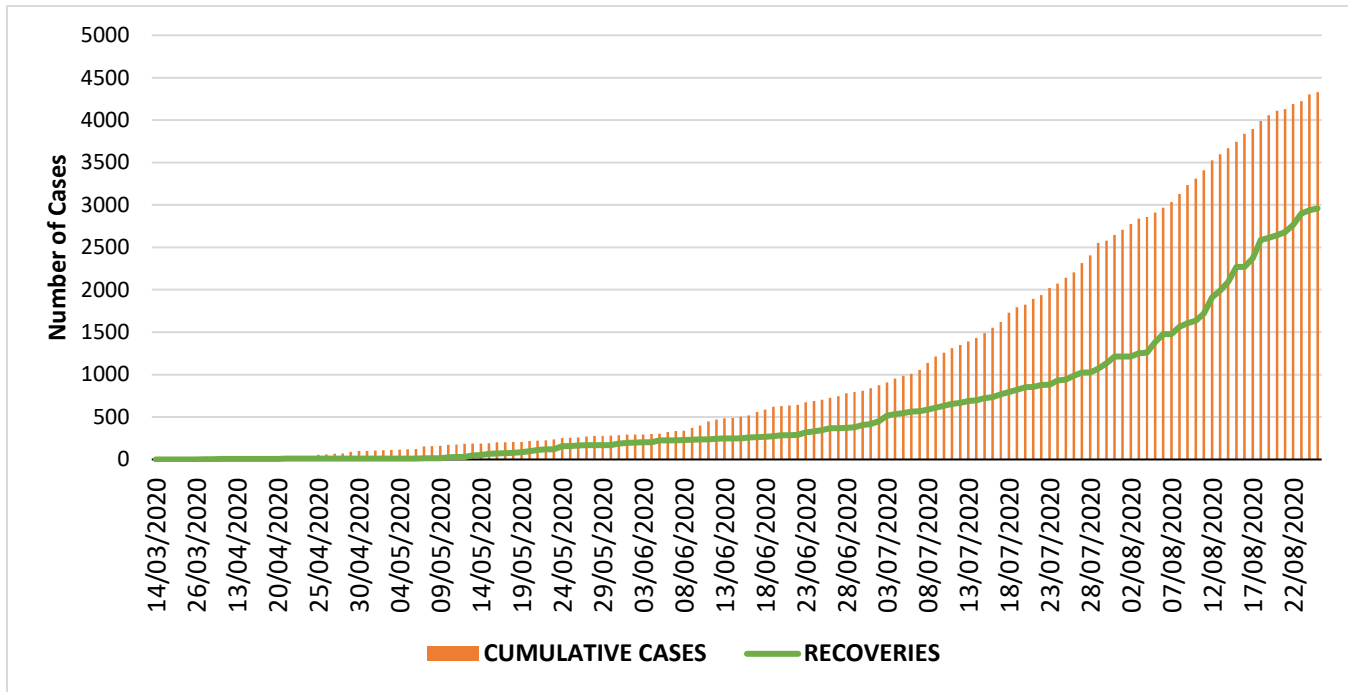




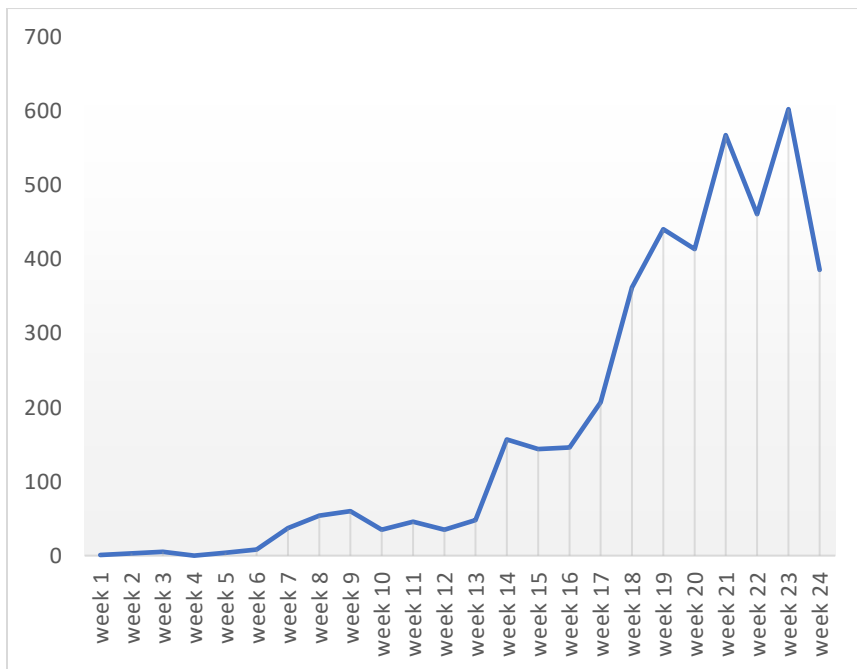
KINGDOM OF ESWATINI MINISTRY OF HEALTH



Cumulative confirmed cases and recoveries



Distribution of cases by Week



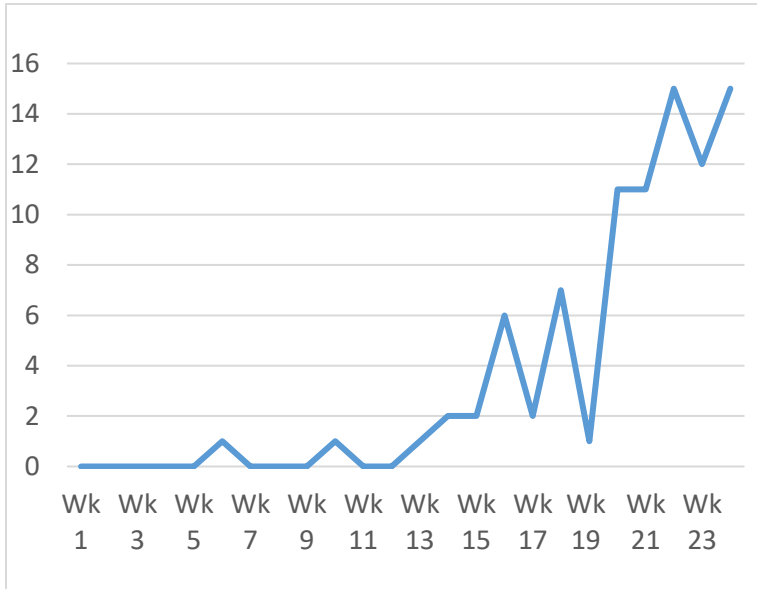
- This is week 24 of the COVID-19 outbreak in Eswatini
- 386 cases have been reported in the last seven days
- Weekly COVID-19 cases decreased by 36% during week 24 compared to week 23.
- Overall, the epidemic curve shows an upward trend.



KINGDOM OF ESWATINI MINISTRY OF HEALTH

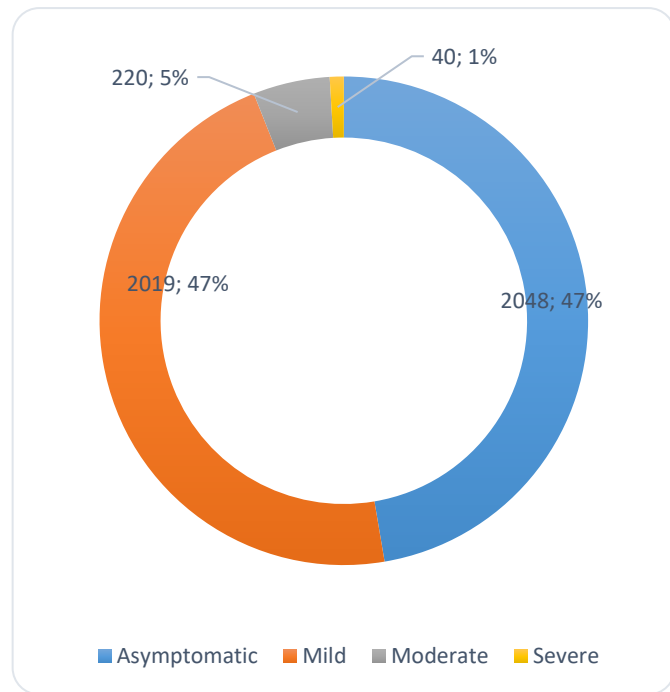


Weekly COVID-19 related deaths

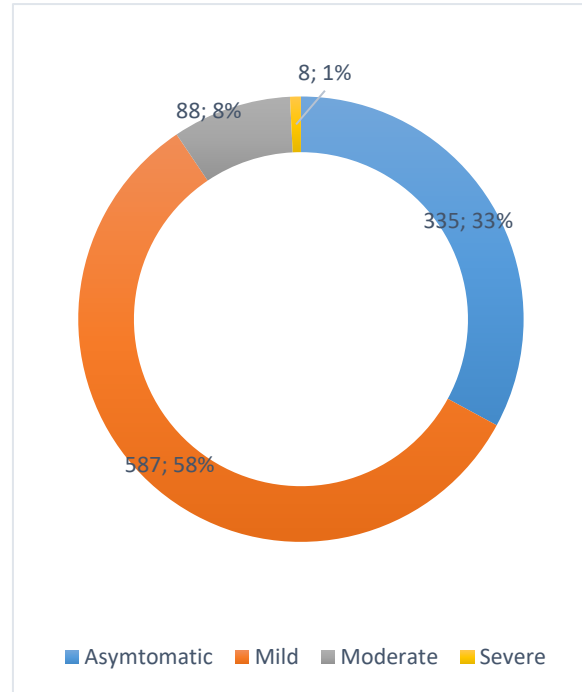


- 15 COVID-19 related deaths have been reported in the last seven days
- Weekly COVID-19 deaths increased by 25% during week 24 compared to week 23.

Distribution of confirmed cases by severity at diagnosis

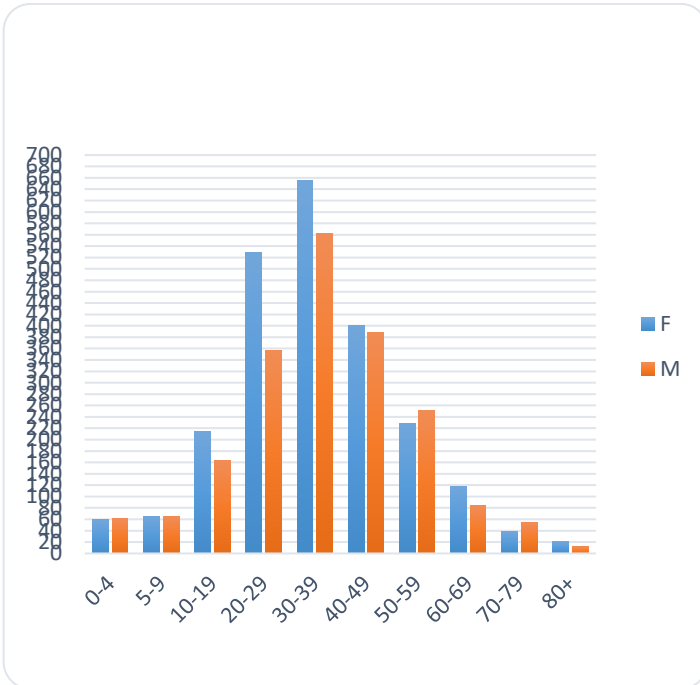


Confirmed cases by severity for the past two weeks





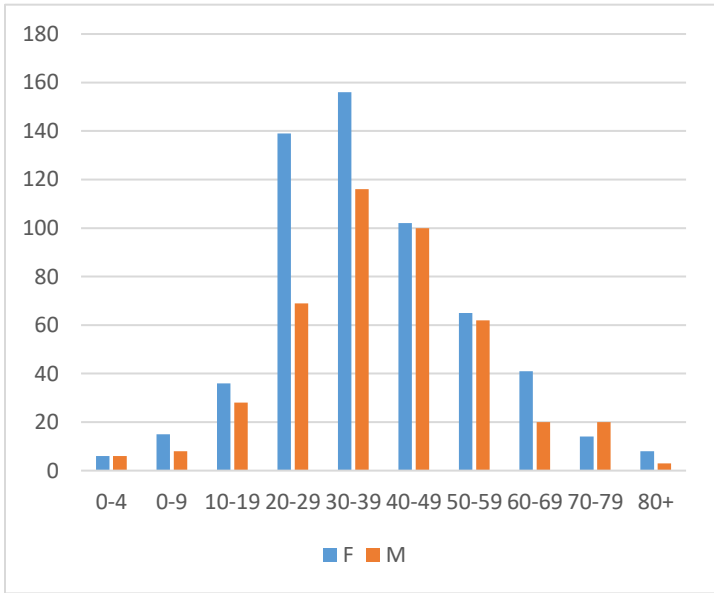
Age-sex distribution of Covid-19 Cases



- Mean age is 36 years (SD 16.0).
- 54% of the cases are females, 46% are males.
- Most (28%) of the confirmed cases are aged **30-39 years**.
- 3% of the cases are children aged <5years.

Age-sex distribution of Covid-19 Cases for the past two weeks

- Mean age is 38 years (SD 16.0).
- 57% of the cases are females, 43% are males.
- Most (27%) of the confirmed cases are aged **30-39 years**.
- 1% of the cases are children aged <5years.

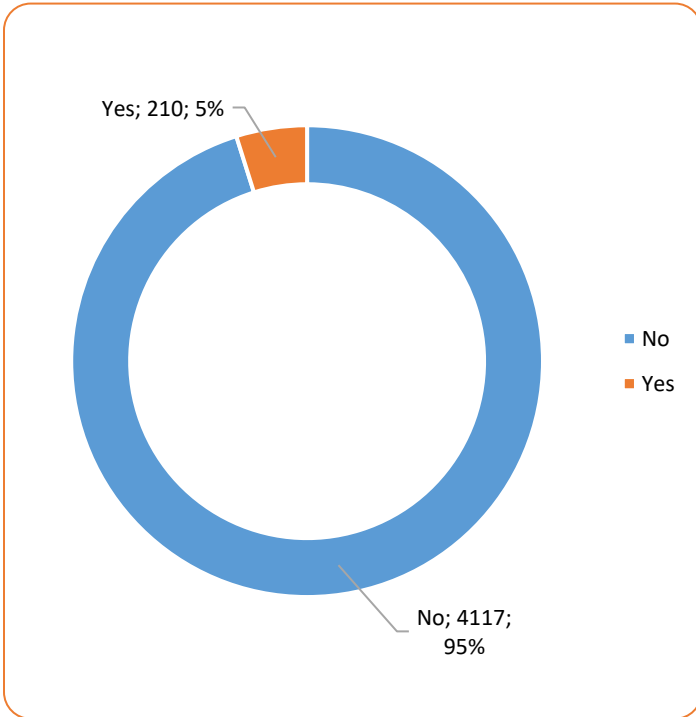




KINGDOM OF ESWATINI MINISTRY OF HEALTH

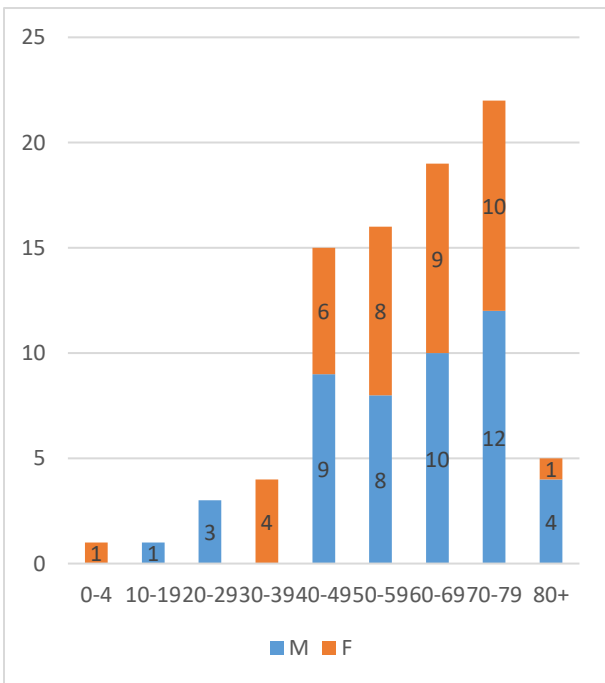


Distribution of cases by HCW and non-HCW

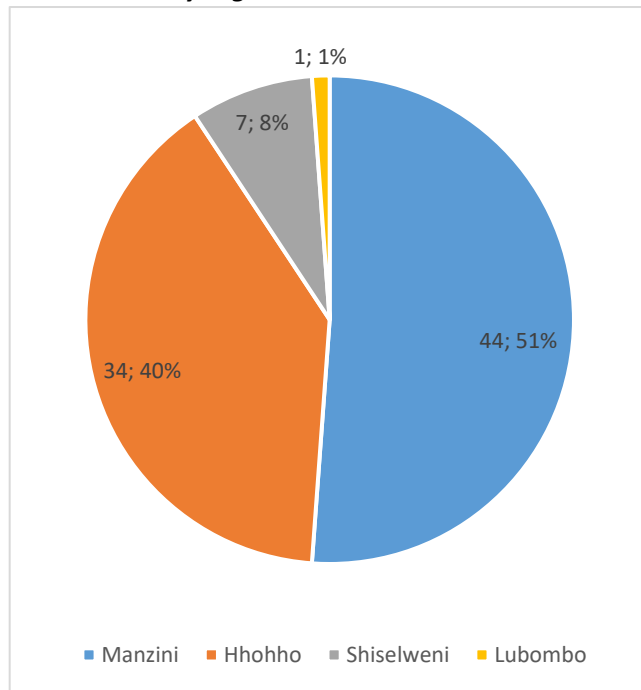


- 5% of the overall infection is among health care workers.

Deaths by age and gender



Deaths by region

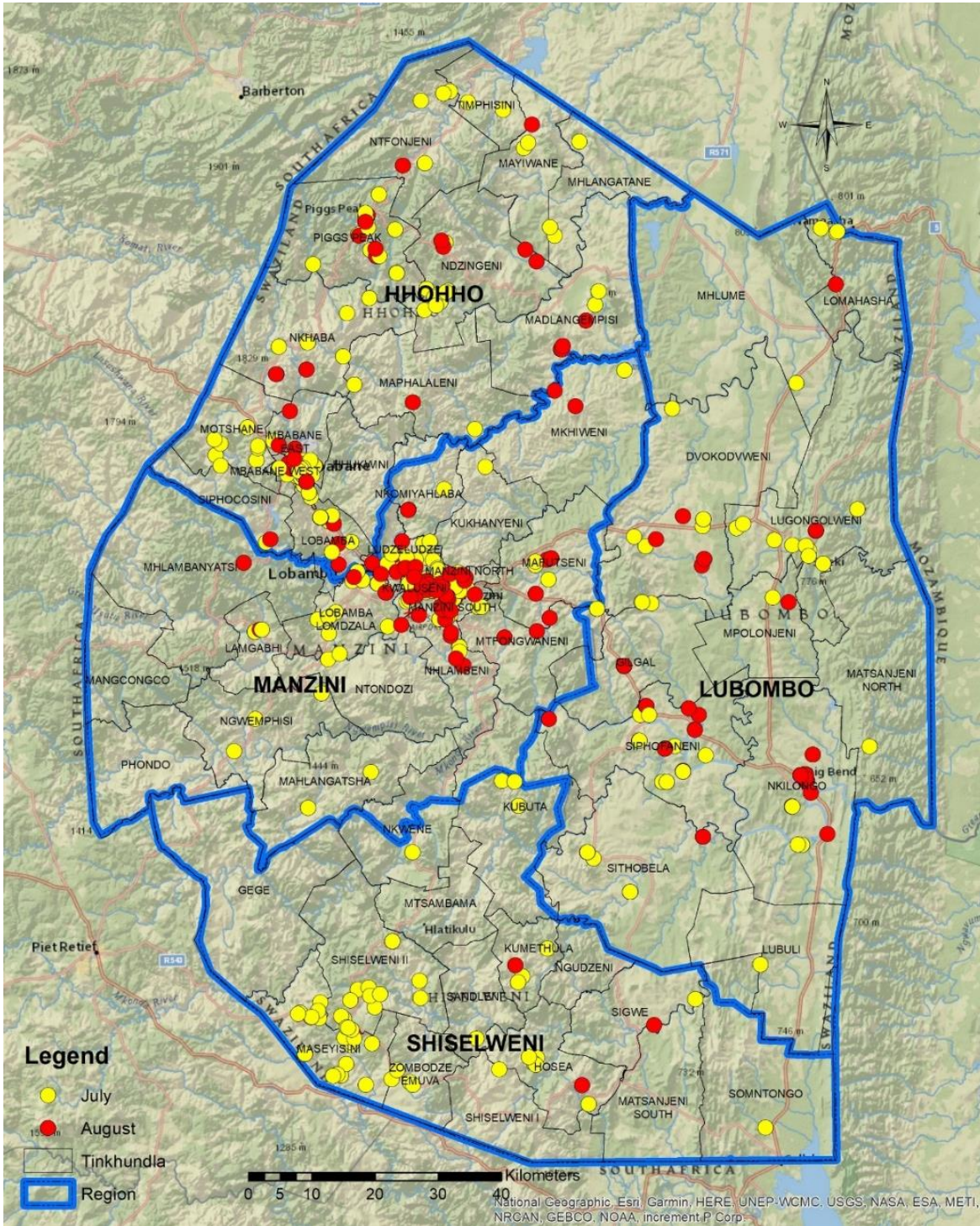




KINGDOM OF ESWATINI MINISTRY OF HEALTH



Distribution of confirmed cases for the past two weeks





KINGDOM OF ESWATINI MINISTRY OF HEALTH



Technical Areas	Variable	No
Alerts	Cumulative No. of alerts received	4121
	Total No. of alerts received in the last 24 hours	30
	Number of travelers screened at points of entry	164
EFTTIT Screening	Cumulative No. screened	10916
	Suspected cases tested	415
	Total No. screened with at least one comorbidity	354
	Cumulative confirmed cases	60
	Positivity rate	14%
Laboratory Testing	Laboratory tests done in last 24 hours	325
	No of positive tests in last 24 hours (%)	23
	Positivity rate	7%
Case Management	Total Active cases	1259
	Registration for care	23

PUBLIC HEALTH/ RESPONSE INTERVENTIONS

COORDINATION, PLANNING AND MONITORING

- The country has adopted an incident management approach for responding to emergencies that established the incident management team that meets on a daily basis at the PHEOC.
- The Hhohho and Manzini Regional PHEMCs are meeting on a daily basis and technical support to the other regions is ongoing.
- The Prime Minister launched the Post COVID-19 Kingdom of Eswatini Economic Recovery Plan.
- The Government of Eswatini extended the national emergency from 19 August to 19 September 2020.
- The Prime Minister announced the opening of schools for Grade VII learners, Form III and Tertiary institutions as from 24 August 2020.

RISK COMMUNICATION, COMMUNITY ENGAGEMENT & SOCIAL MOBILISATION

- Risk communication team developing new jingles for TV and radio addressing the change in guidelines.
- Mobilization for risk communication activities in the Manzini Region is ongoing.

SURVEILLANCE AND RESPONSE

- COVID -19 screening is ongoing in all health facilities to identify suspect cases.
- Contact tracing and screening of suspected cases continued by RRTs.
- EFTTIT teams are continuing with the door to door screening and testing for COVID-19.

POINTS OF ENTRY

- Screening of Travelers is ongoing in all presently opened Formal 7 Points of Entry (PoE) by Port Health Officers (PHOs).



KINGDOM OF ESWATINI MINISTRY OF HEALTH



- All returning residents are quarantined using two strategies (institutional and self-quarantine).

LABORATORY

- Laboratory testing for COVID-19 is ongoing at the National Reference Laboratory.
- The COVID-19 Testing Laboratory achieved 100% performance on the WHO/AFRO External Quality Assurance.

INFECTION PREVENTION AND CONTROL

- Data collection for the IPC assessment in the Manzini region was completed and data analysis and report writing is ongoing.
- The review and updating of WHO COVID-19 IPC SOPs is ongoing.
- IPC IEC has been developed and distribution to health facilities is also ongoing. The IEC focuses on donning and doffing of PPE, hand hygiene with soap and water and alcohol hand rub.

CASE MANAGEMENT

- The Hhohho and Manzini Regional Health Management Teams are working with Regional Hospitals and Health Centre to decentralize management of confirmed COVID-19 cases. The teams were oriented on updated case management guidelines.
- Equipment for critical care management has been procured and delivered.
- Training of Trainers (TOT) training on critical care for health care workers has been undertaken, and the regional trainings are scheduled.

MAINTAINING ESSENTIAL HEALTH SERVICES AND SYSTEMS

- Data collection for the assessment of continuity of services in the Manzini region was completed and data analysis is ongoing.

SOURCE OF INFORMATION:

- Eswatini Public Health Emergency Operations Center (PHEOC).
- COVID-19 preparedness and response plan.
- Regional and National Public Health Emergency Management Committees (PHEMC).

This report can also be found on the government website on <http://www.gov.sz/index.php>

Information Controls	<ul style="list-style-type: none"> ▪ Incident Management Team
Submitter's Details:	Mr. Nhlanhla Nhlabatsi, Epidemiologist, MOH EDCU Tel: +268-24047436 Email: epidemiologymoh@gmail.com



COVID-19 Training Summary 20_ Updated 23rd August 2020

Introduction

Eswatini is one of the African countries that are faced by the COVID-19 global pandemic which was declared a National Emergency on the 17th March 2020 by His Majesty King Mswati III. Since then the MOH, with the support of implementing partners, has conducted a variety of Comprehensive National, Regional and facility-based trainings on the prevention and management of COVID-19, as well as some trainings focussing on specific areas of the COVID-19 response or specific healthcare workers cadres.

Evolution of COVID-19 Training Objectives

17 March- 17 June 2020

- Capacitate and sensitize HCWs and relevant staff on COVID-19.
- To get HCWs involvement in the COVID-19 response.

17 June- 17 July 2020

- Provide HCWs and relevant staff on in-depth knowledge on COVID-19 topics.
- Capacitate HCWs on data management tool for COVID-19 patients.

17 July- date

- Train HCWs on updated Case Management guidelines and revised testing strategy.
- Conduct trainings on critical care for COVID-19 patients.

Overall no. HCWs trained

6,772*

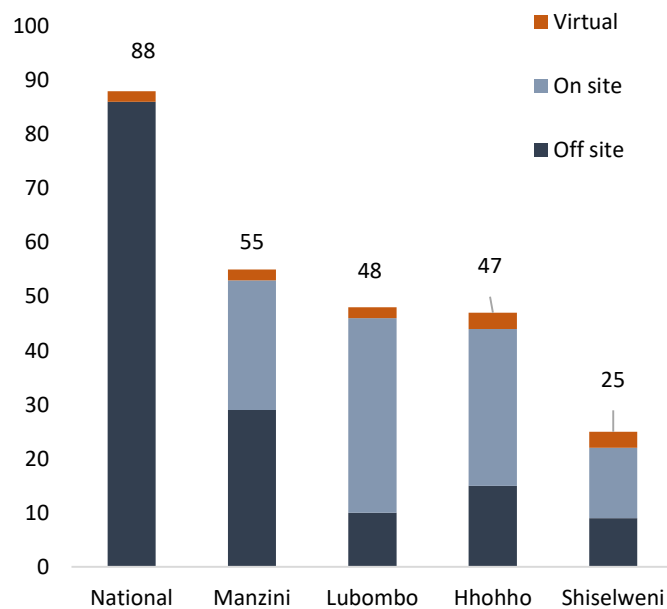
*Some HCWs may have been trained more than once

Weekly highlight

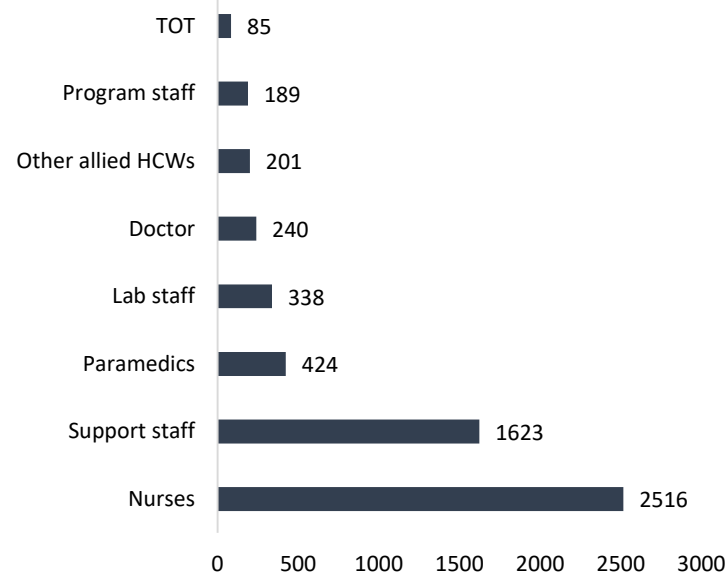
In the week of the 17th of August the MoH conducted trainings on COVID-19 and NCD management.

National, regional and facility-based trainings

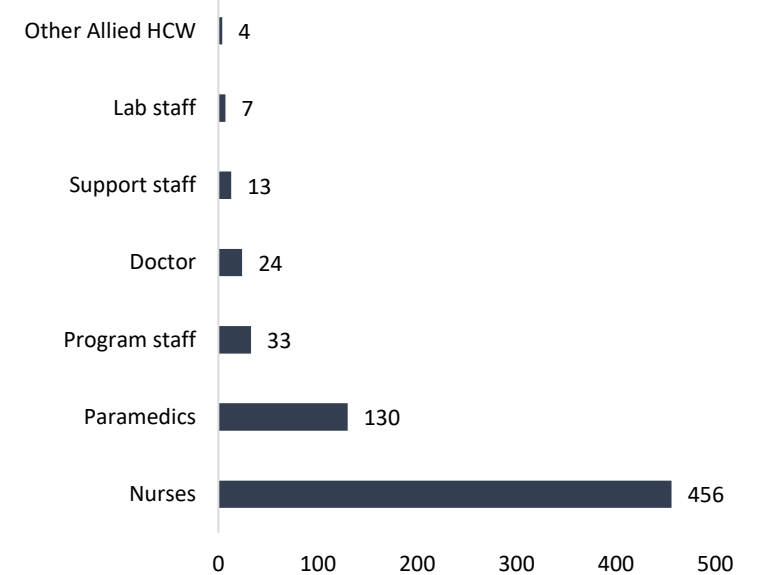
No. onsite and offsite trainings conducted



No. trained on general COVID-19 Management



No. trained on updated Case Management guidelines

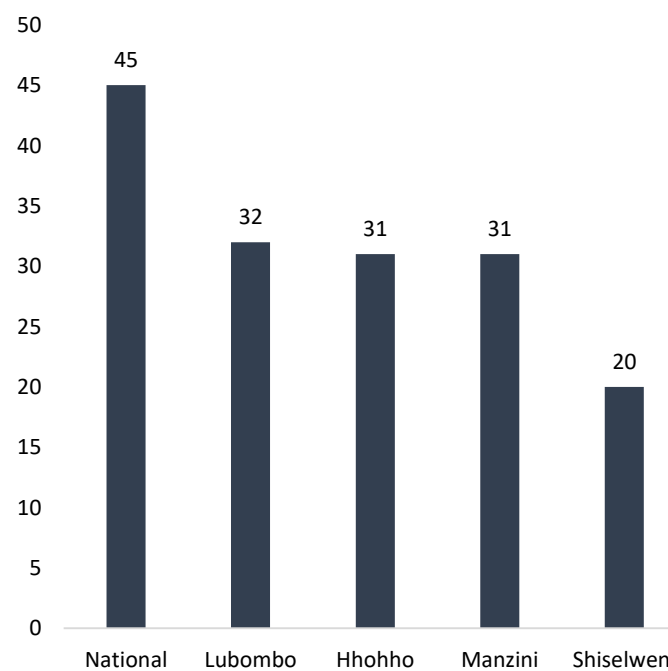


Deep dive trainings

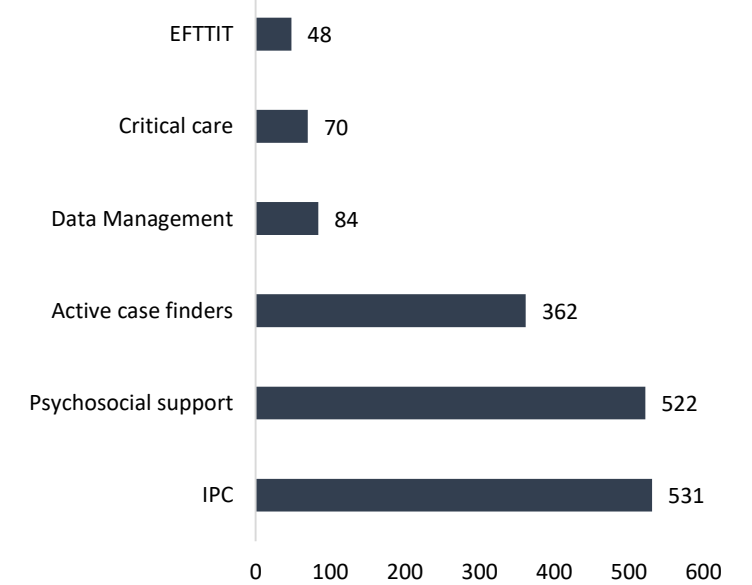
Deep-dive trainings are conducted to provide an in-depth knowledge on a selected topic or part of the COVID-19 response, or it could be a training targeted for a specific cadre based on their responsibilities.

Deep-dive trainings are not counted as part of the overall comprehensive COVID-19 training above some HCWs have attended deep dive trainings in addition to the comprehensive training.

No. deep dive trainings conducted



No. HCWs trained on deep dive topics



Next week's plan

In the week of the 24th of August the MoH will be conducting trainings on the critical care package, continuing with trainings on the updated Case Management trainings for repurposed nurses in the Manzini region, as well as trainings on COVID and NCDs in Lubombo and Shiselweni regions.